

### SPECIFICATION

#### MECHANICAL:

- Operating Force:  $180 \pm 70$ gf
- Operation Temperature Range:  $-10^{\circ}\text{C}$  to  $+60^{\circ}\text{C}$
- Storage Temperature Range:  $-20^{\circ}\text{C}$  to  $+75^{\circ}\text{C}$

#### ELECTRICAL:

- Electrical Life: 10 000 cycles
- Rating: 25mA, 24V DC
- Contact Resistance: 70m $\Omega$  max
- Insulation Resistance: 100M $\Omega$  min. at 100 VDC
- Dielectric Strength: 100 VAC/1 minute
- Circuit: 1P2T
- Travel: 2.7mm

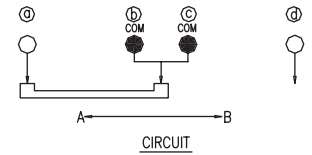
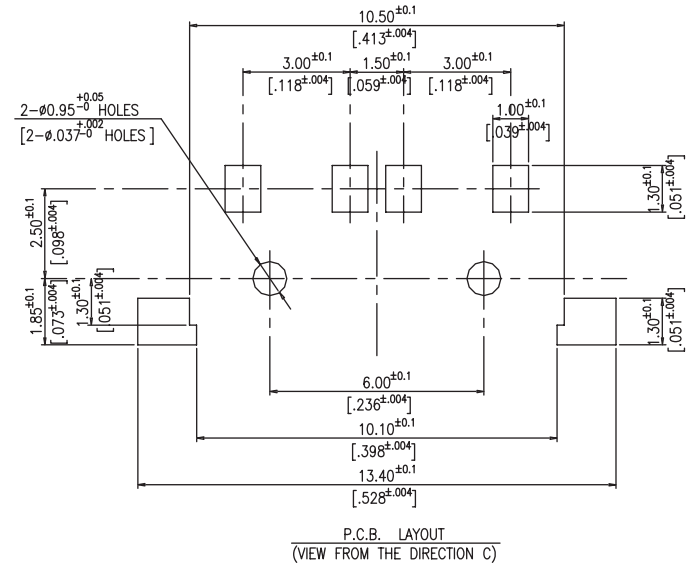
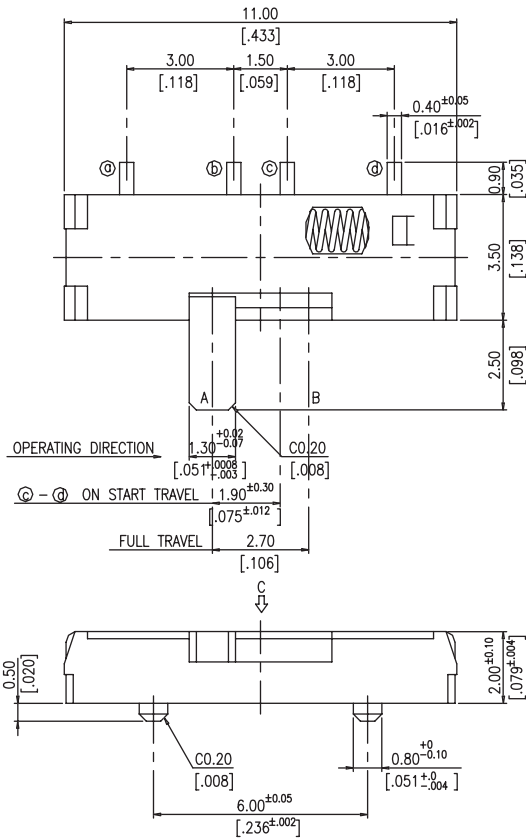
### MATERIAL:

- Stem: UL 94V-0 High-Temp Thermoplastic.  
Color: Black
- Cover: Nickel Silver
- Spring: Stainless Silver
- Contact: Alloy Copper, Gold Plated
- Base: LCP High-Temp Thermoplastic  
Color: Black
- Terminal: Phosphor Bronze, with Silver Plated.

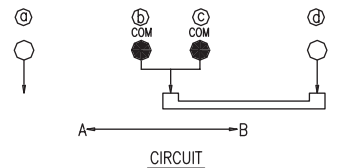
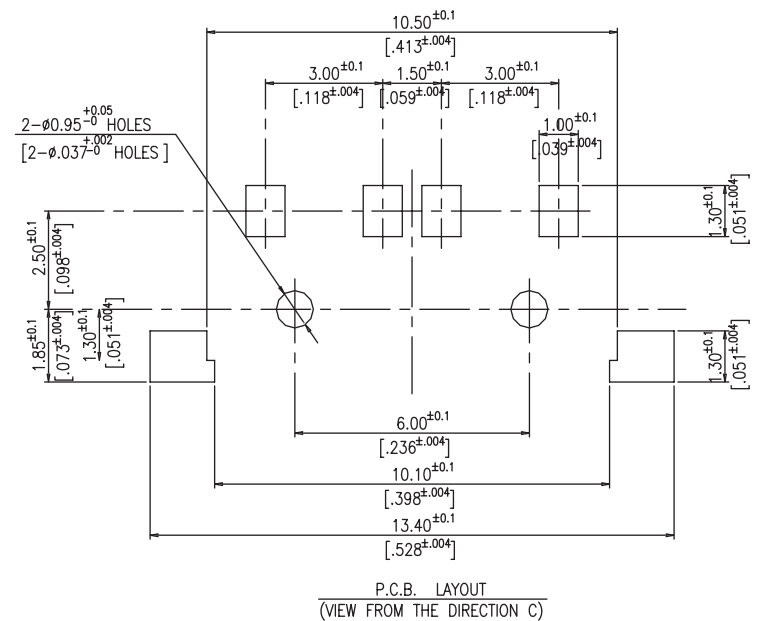
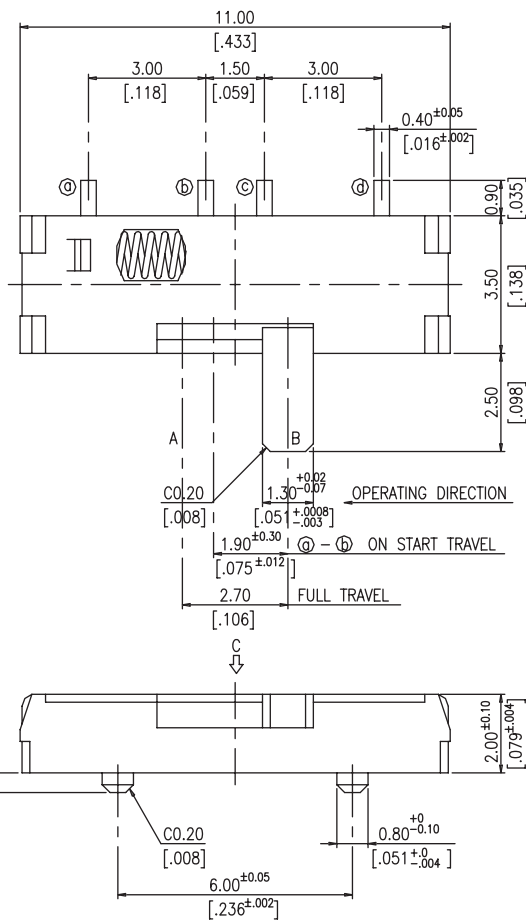
### Packaging:

Part Number	Number per Tube	Number per Reel
SSRS-12R	-	2000
SSRS-12L	-	2000

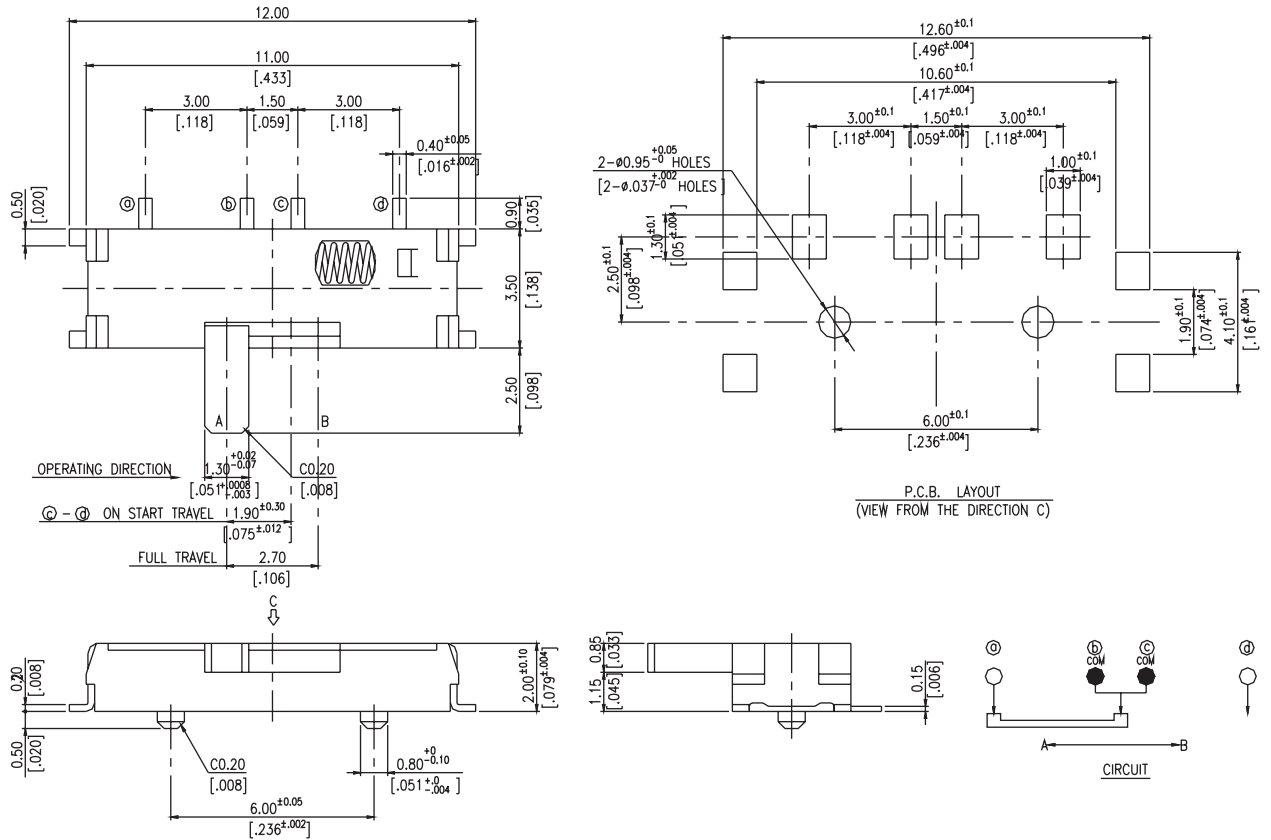
### SSRS-12L



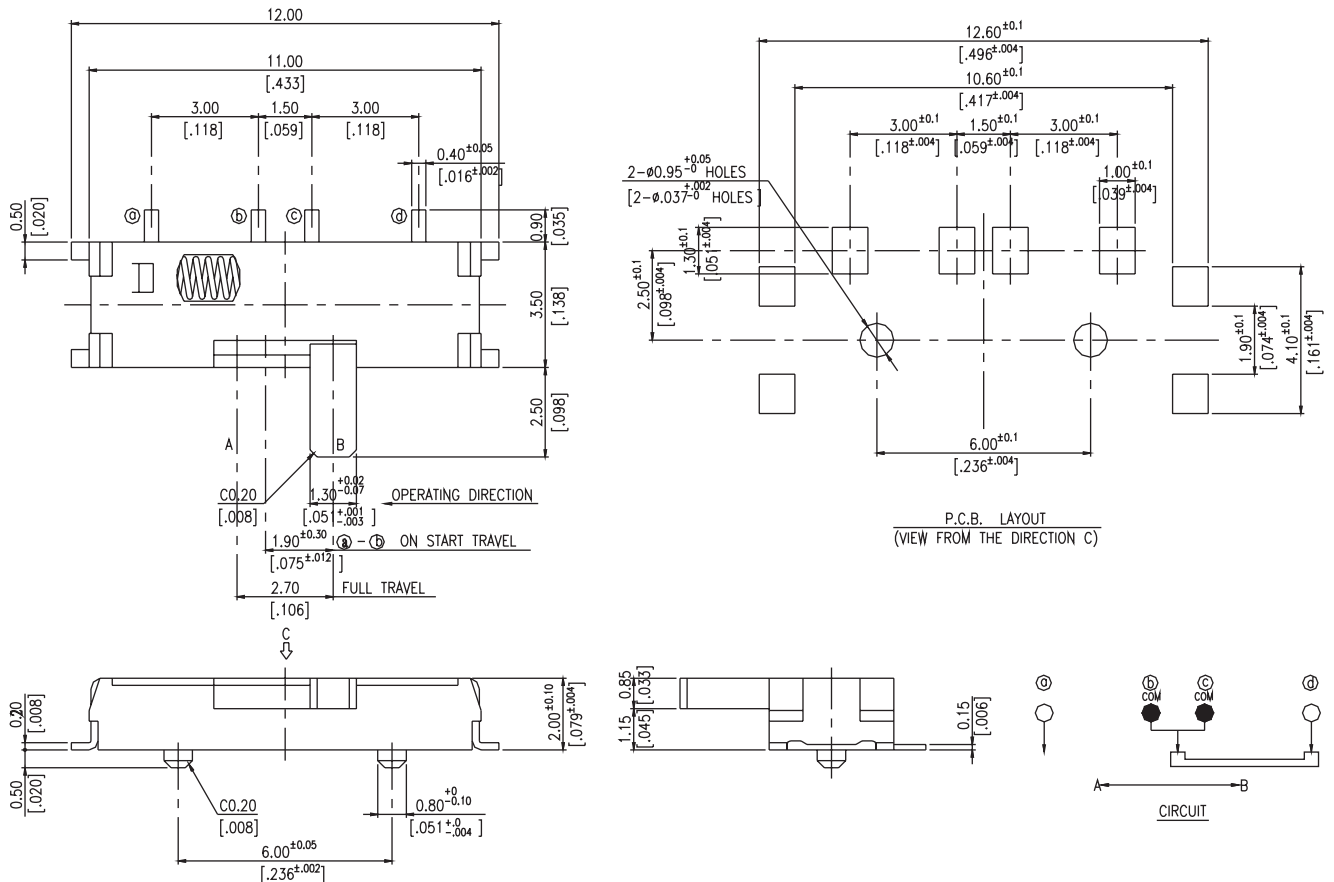
### SSRS-12R



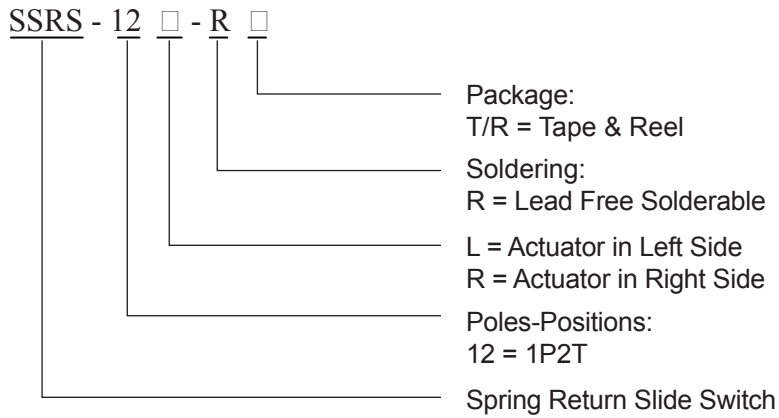
### SSRS-12LG



### SSRS-12RG



## HOW TO ORDER:



## Soldering Process:

Hand Soldering: Use a soldering iron of 30 watts, controlled at 350°C approximately 5 seconds while applying solder.

Reflow Soldering: When applying reflow soldering, the peak temperature of the reflow oven should be set at 260°C max.

